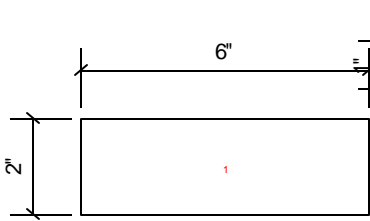


Acorn Stamp Holder

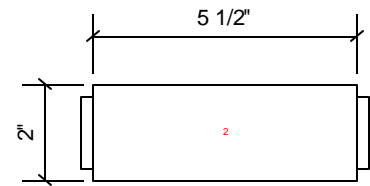
Andrew Hilton

Hilton Handcraft of the Ozarks

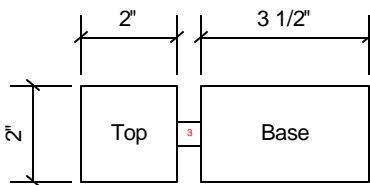
www.HiltonHandcraft.com



1 Start with a 6" long x 2" diameter blank and round it. All Walnut is good but a Walnut top with a spalted white wood (maple, sycamore, etc.) works well too

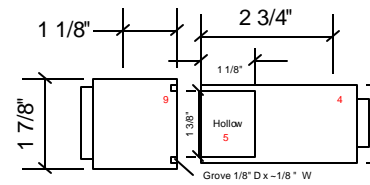


2 Make tenons 1/4" long on each end of blank for scroll chuck



3 Part the Top and Base. Make the Top 2" long and the Base 3 1/2" long. These are the minimum lengths. Can make them longer if needed.

4 BASE
Put Base into chuck and turn down to 1 5/8" diameter.

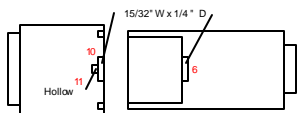


5 Drill hole in the end of the Base with forstner bit that is 1 3/8" diameter x 1 1/8" deep

6 Drill hole in the hole just created that is 15/32" diameter x 1/4" deep

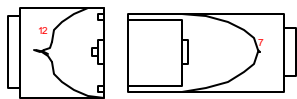
7 Turn to shape. Make a small nipple at the bottom to mimic real acorn shape. Don't make the shape too long. At most, make it 3" long total.

8 Press and glue a 5/16" x ~1 3/8" long bolt into hole created above. CA glue is fine. Center the bolt in the bigger hole.

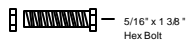


9 TOP:
Mount Top into chuck. True it. Face off the end. Measure the inside and outside of the rim of the Base. Transfer these measurements to the Top. Cut groove to match so the Base slides in comfortably.

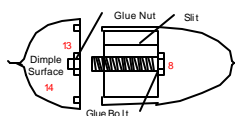
10 Drill hole for nut that is 15/32" diameter x 1/4" deep



11 Hollow out a small area slightly smaller diameter than hole just drilled about 1/4" - 3/8" deep. This will let the bolt thread up into it if a little too long.



12 Turn to shape. Leave area at top to make a curved stem after a little carving.



13 Press and glue a 5/16" nut into the hole created above.

14 Dimple surface of the top with small ball rasp in a rotary tool. Make it a little rough ... pulling the rasp a little to give it the appearance of a real acorn top.